

Studio Sergison  
Accademia di architettura  
Università della Svizzera italiana  
Spring Semester 2021  
Valle di Muggio. Strategy plan

5	Introduction
9	Project sites
10	Muggio
22	Caneggio
36	Cabbio
48	Bruzella
60	Casima
74	Monte
86	Campora

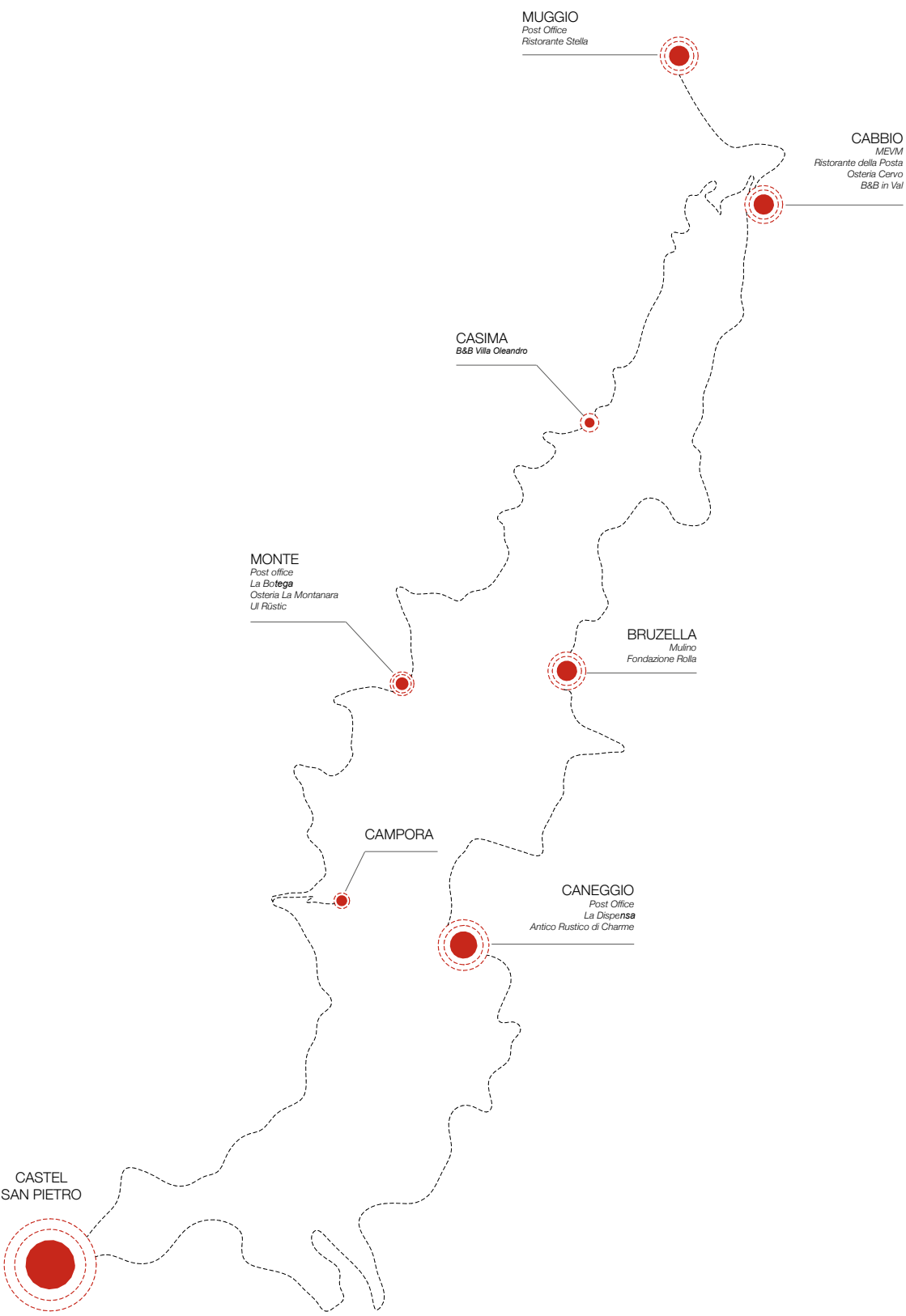
The studies presented in this document offer strategies for the urban development of the seven principal villages in the Valle di Muggio. They consider the future consolidation and expansion of Bruzella, Cabbio, Campora, Caneggio, Casima, Monte and Muggio and their interdependency in the context of the wider territory.

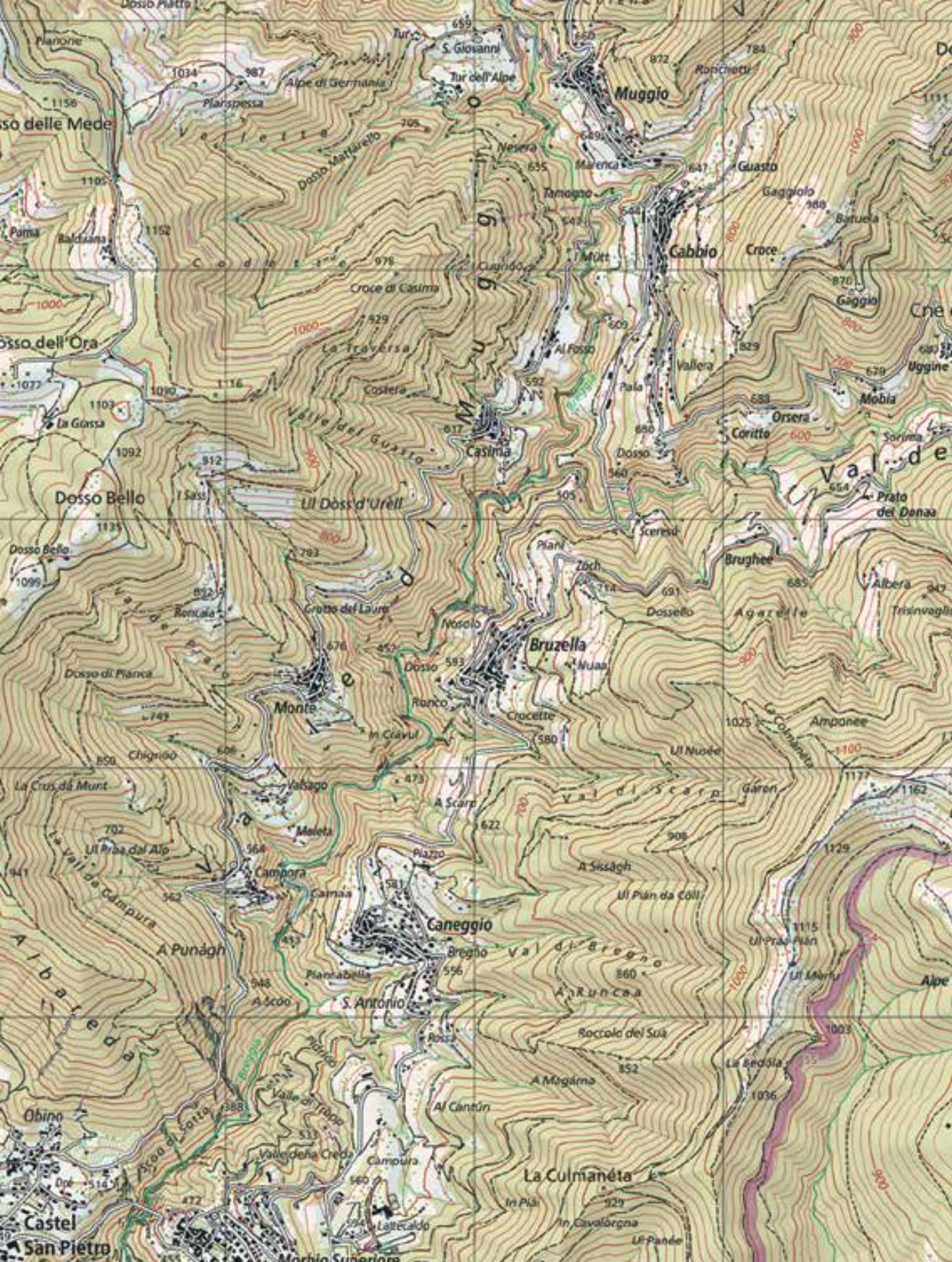
This corner of Ticino is unique in many ways, with its own special qualities and character. It is also, subject to the same vulnerability as many of the villages that lie along the main route that runs through the Canton linking the north and south of Europe. Although this territory has been blighted by unchecked speculative development of poor urban and architectural quality, its building heritage remains largely intact in the higher valleys.

The strategies contained in this document are offered as a form of propositional planning: they take the conditions detailed in the local planning rules and offer a more precise vision for safeguarding the Valle di Muggio villages against poor and inappropriate building in future. While they have no legally binding status, they do offer a vision for managing the future urban development of the area.

Strategy Plan  
Public amenities

Post Office	Monte	
	Muggio	
	Caneggio	
Grocery	Monte	La Butega
	Caneggio	La Dispensa
Restaurant	Monte	Osteria La Montanara
	Cabbio	Ristorante della Posta
		Osteria Cervo
	Muggio	Ristorante Stella
Hotel/ B&B/ Vacation House	Casima	B&B Villa Oleandro
	Cabbio	Osteria Cervo
		B&B in Val
	Monte	UI Rustic
	Caneggio	Antico Rustico di Charme
Culture	Cabbio	Museo Etnografico della Valle di Muggio
	Bruzella	Mulino
		Fondazione Rolla





Project sites

1 Muggio	Giada Walzer Estelle Gagliardi Elsa Labouré Alex Farina
2 Caneggio	Valentina Roncoroni Martina Penati Angela Monterisi Sara Mantovani Filippo Dal Lago
3 Cabbio	Valentin Sanchez Justin Rellstab Olivia Chimenti
4 Bruzella	Giulia Mauri Pietro Falchi Martina Bertani Sophie Agne
5 Casima	Chiara Maisto Daniele Boschesi Manon Arduino
6 Monte	Giusy La Licata Jai Yoon Kim Gauthier Füllemann
7 Campora	Beatrice Zago Francesco Tudino

The survey identified three immediate necessities. A study of existing paving resulted in a proposal to replace the existing asphalt with traditional cobble stones to increase surface permeability while discouraging the use of motor vehicles within the town.

Secondly, the new design for two public spaces explored through the requalification of the public realm.

The third proposed intervention consists in defining a framework for planned developments along the edge of the existing built area, as a way of managing the controlled expansion of the town.

Students

Giada Walzer  
Estelle Gagliardi  
Elsa Labouré  
Alex Farina





0 50 100

Plan of the existing settlement









- Disused public buildings
- Residential buildings
- Public spaces
- Abandoned houses
- Old barn/storahouse
- Buildings undergoing renovation
- Green areas

Existing condition and proposed changes to public realm.



Existing condition and proposed refurbishment of public buildings.

- 1  
Giada Walzer
- 2  
Estelle Gagliardi
- 3  
Elsa Labouré
- 4  
Alex Farina



A site assessment drew attention to three different housing typologies – individual houses, row houses and infill buildings. The town centre is dense and well articulated, whereas the new developments have none of these qualities and lack any apparent order.

The strategy plan aims to redefine the village boundary, set out a clear network of pedestrian routes, and restore historic buildings and public spaces.

The edges of Caneggio were redrawn to limit density, contain urban expansion and prevent new developments from encroaching into the woods.

The integration of public facilities such as seating areas makes the network of footpaths more accessible to the community.

Students

Valentina Roncoroni  
Martina Penati  
Angela Monterisi  
Sara Mantovani  
Filippo Dal Lago



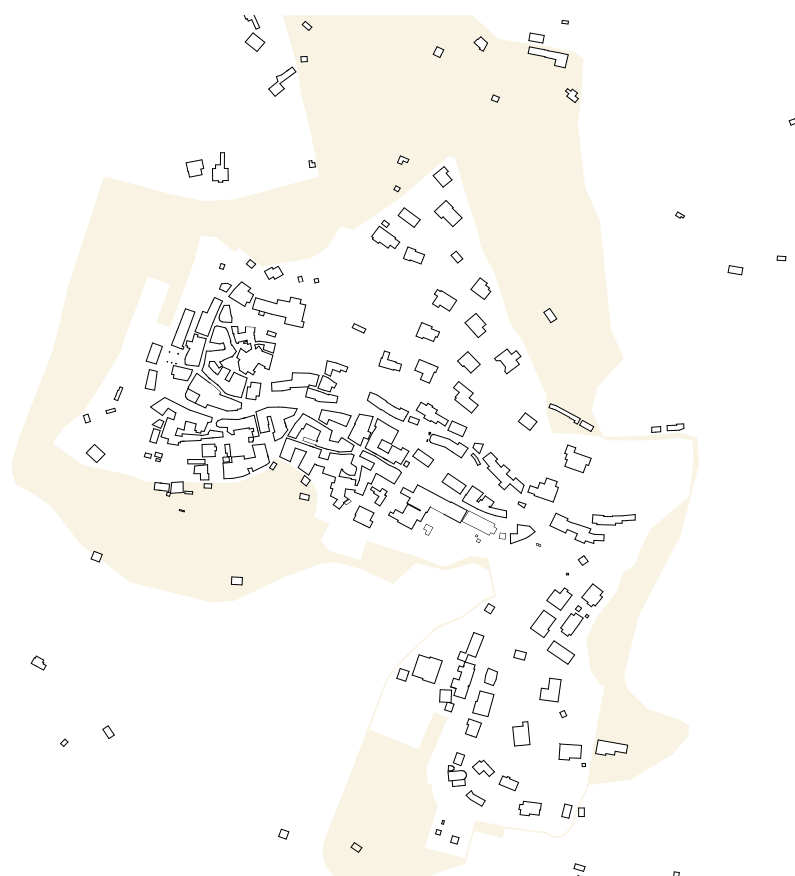




Study of existing building uses



Proposed areas for future adjustments and development



Proposed restricted development area



Proposed edefinition of the public realm and densification programme



Adjustments to public realm

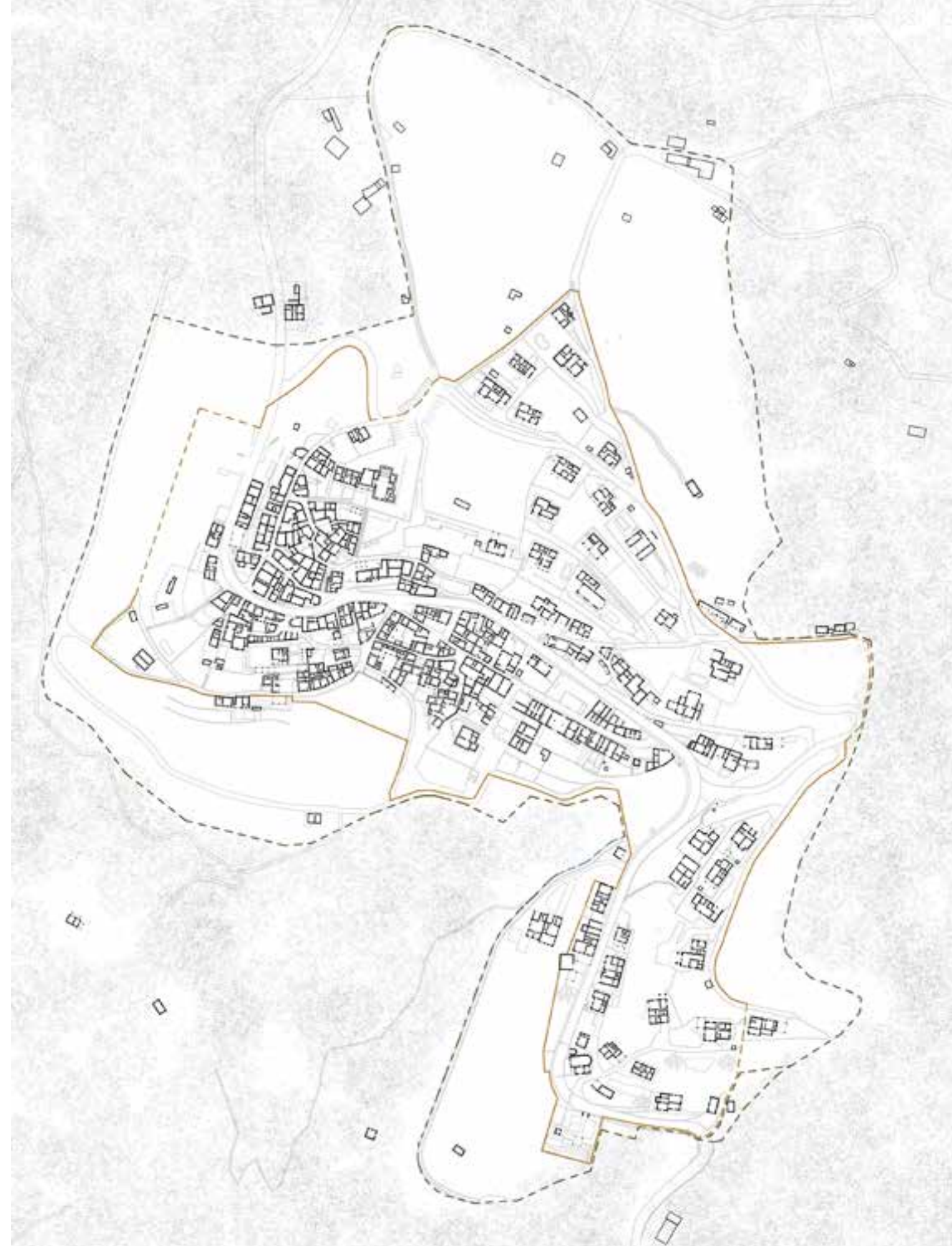


Adjustments to landscape



Areas formerly in agricultural use

Proposed limits to future building development



- 1  
Valentina Roncoroni  
2  
Martina Penati  
3  
Angela Monterisi  
4  
Sara Mantovani  
5  
Filippo Dal Lago



Through a comprehensive study of the existing urban fabric, the settlement's primary needs were analysed. What emerged as priorities are the need to restore several buildings and redefine the public realm.

The strategy plan focuses on the redefinition of the main square in front of the church. The proposal includes the repaving of the square, the introduction of seats and benches and suggestion for future planting. In addition, replacing the existing stair handrail is proposed to improve accessibility.

Finally, three areas were identified for further development. The proposal redefines the village boundary and sets out guidelines for managing further development.

Students

Valentin Sanchez  
Justin Rellstab  
Olivia Chimenti



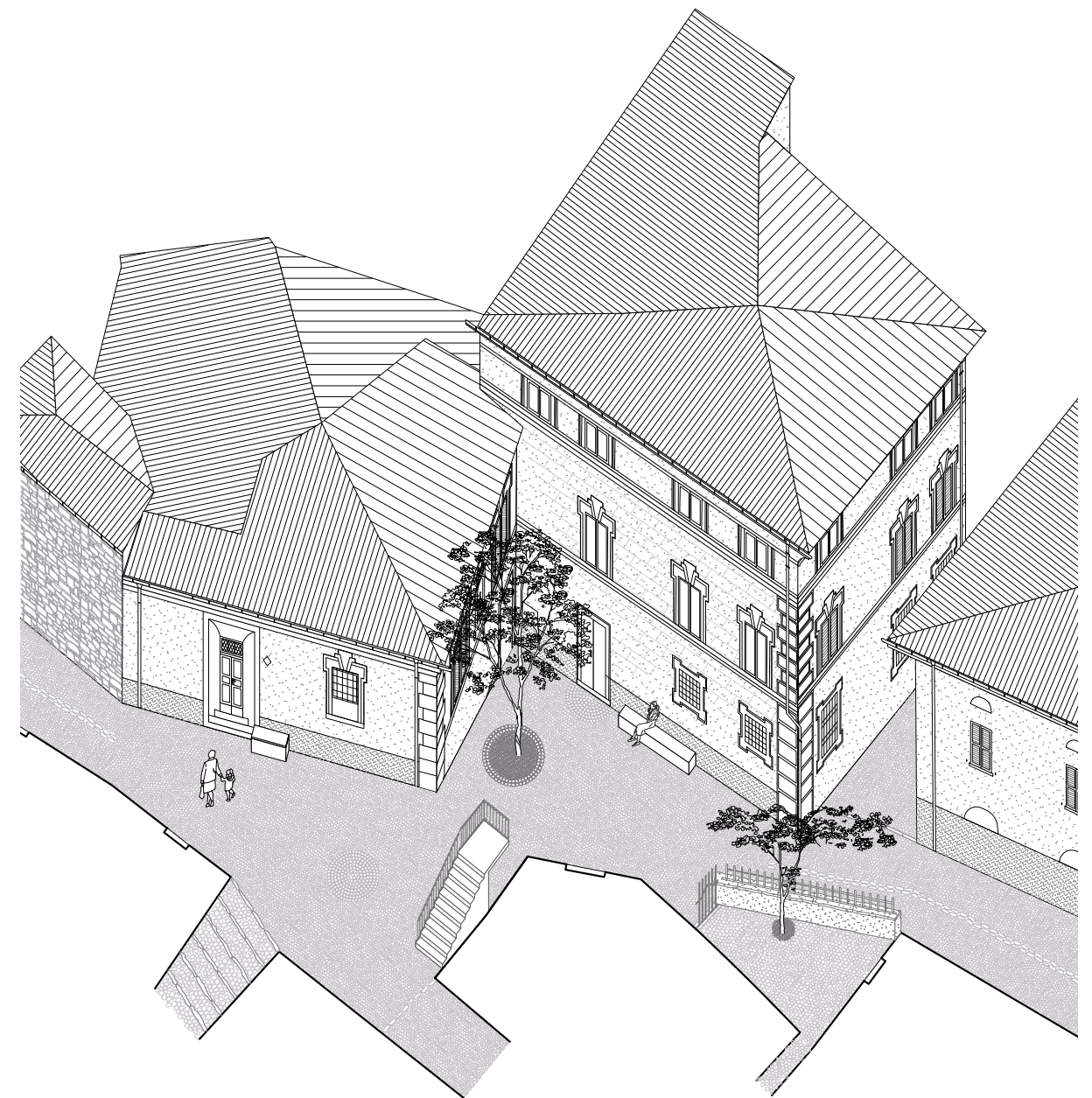




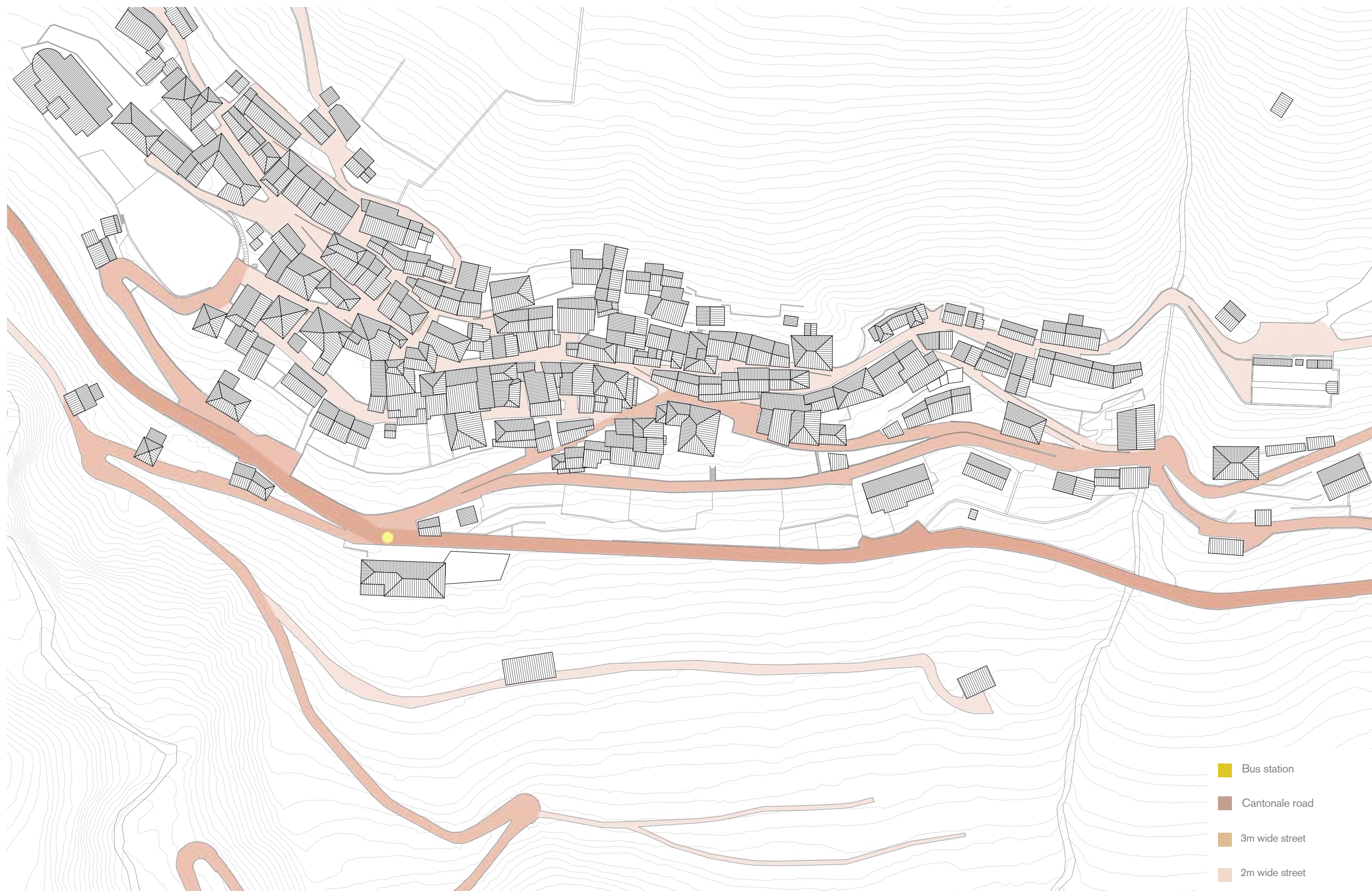
Study of buildings in need of restoration and adjustments to public



Strategy for redefining the public realm



Study of public realm





Section of new public space in front of the church

- 1  
Valentin Sanchez
- 2  
Justin Rellstab
- 3  
Olivia Chimenti



#### 4 Bruzella

The strategy plan aims to consolidate and expand the existing social and physical conditions, creating a framework for community life that takes into consideration the territory in its full complexity.

Rossi's plan of Bruzella was used as the basis of a study of building use in the village, identifying primary residences, second homes and buildings in disrepair. The first intervention focuses on ways of moving through the village. The paving between the church square and the Piazzetta Antica incorporates a strip of stones to mark the connection between the two piazze connected by daily rituals.

The church square is adjacent to the only cultural institution in the village, the Fondazione Rolla. The intervention focuses on enclosing the public space between the two buildings separating it from the cantonal road and connecting it to the church square, in order to encourage the use of both.

New housing typologies are also proposed as part of a strategy to make restore derelict buildings. The proposal envisages the introduction of new typologies within these compact sites, with subtle adjustments to interiors and improved accessibility.

#### Students

Giulia Mauri  
Pietro Falchi  
Martina Bertani  
Sophie Agne



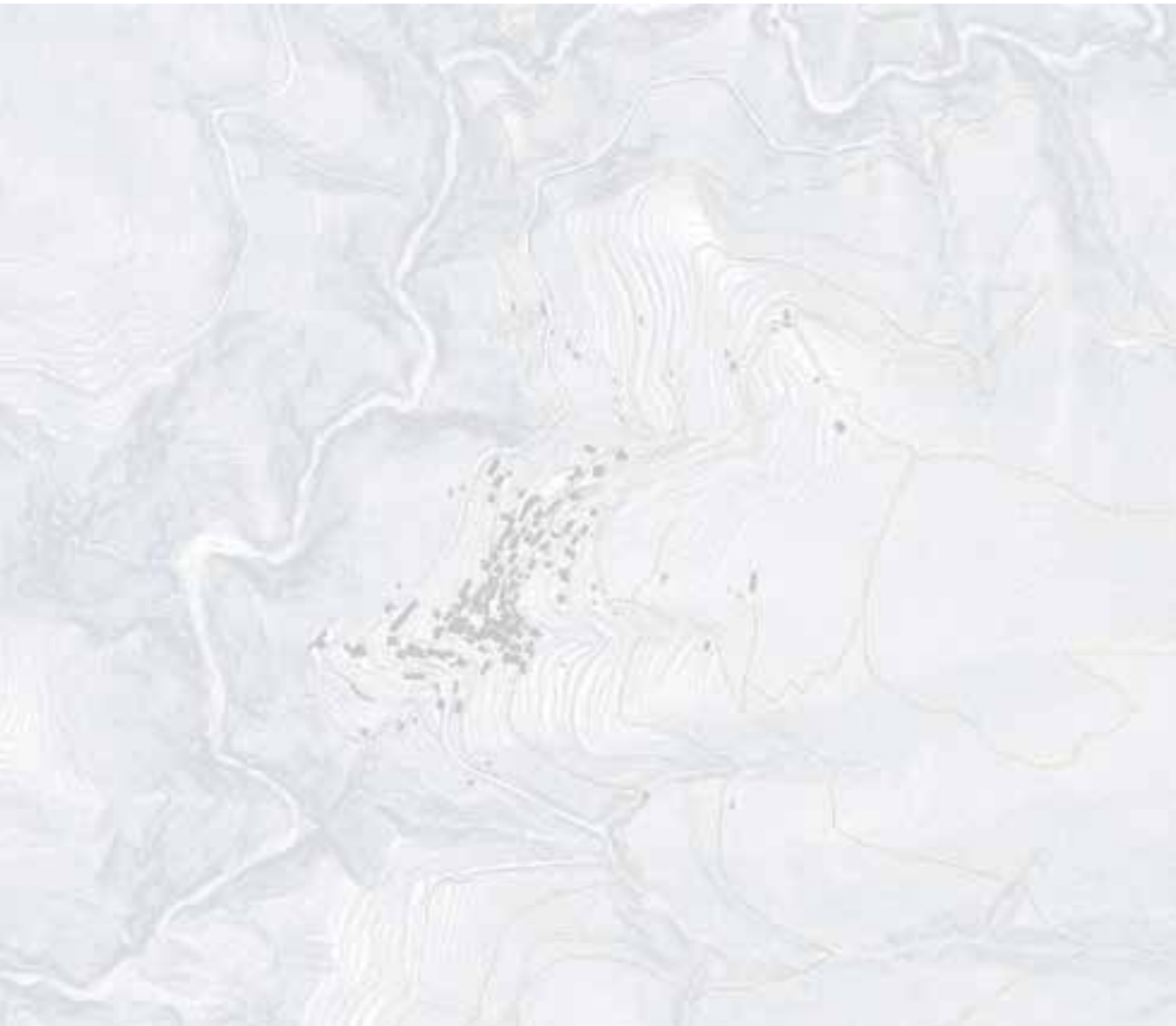


0  
|

50  
|

100  
|





Bruzella and its surroundings



Study of project sites



Study of building uses and conditions



Proposed adjustment to public realm



Strategy for the repaving of public areas



Detail of public realm paving

- 1  
Giulia Mauri
- 2  
Pietro Falchi
- 3  
Martina Bertani
- 4  
Sophie Agne



The survey of Casima revealed a series of critical issues. It was observed that the existing road network - the main road that runs through the village, the secondary and tertiary pedestrian streets - follows the contour lines and is interrupted by stairs perpendicular to the main road connect one level to another.

Building typologies within and outside the urban nucleus were also considered, together with the spaces between them, existing green areas and the paving of public spaces.

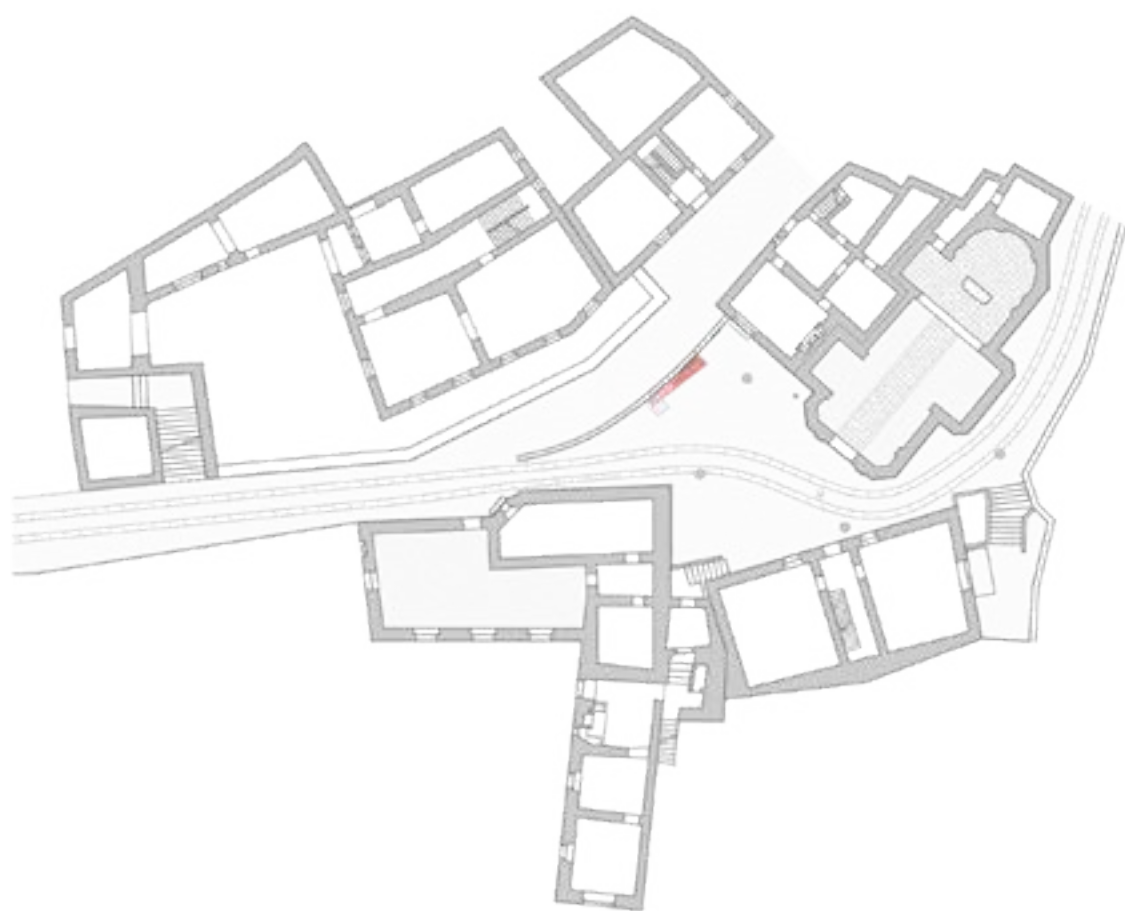
The strategy plan proposes a new path that connects the north and south side of the village. In addition, a new passageway leading to the Casa Comunale is proposed to reestablish its role as a focus for community exchange and debate.

Students

Chiara Maisto  
Daniele Boschesi  
Manon Arduino







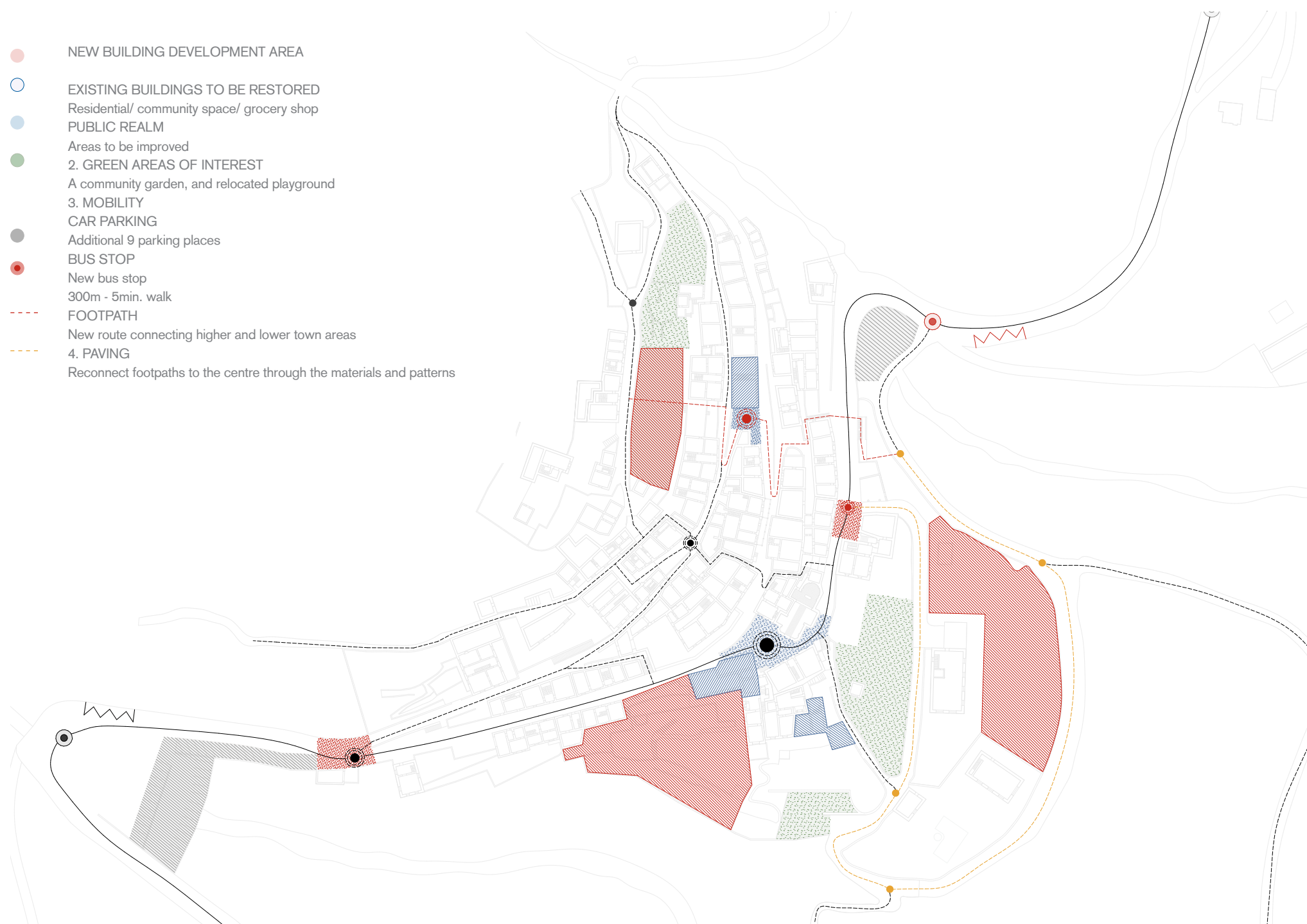
Strategy for redefining the public realm







36



Study of building to be refurbished and proposed adjustments to public realm

- 1  
Chiara Maisto
- 2  
Daniele Boschese
- 3  
Manon Arduino



0 50 100

Proposed strategy plan



## 6 Monte

Many remarkable qualities emerged from a careful study of the existing settlement. The strategy proposed is based on enhancing the existing urban conditions without extending the current settlement area.

A study of the existing paving resulted in a strategy for repaving the main street and the area in front of the church with stone, so as to encourage cars to drive slowly through the village.

A series of small interventions are proposed, such as two new stairways to improve accessibility and surface water drainage, and public benches for people to sit and enjoy the view over the valley. New stone paving is also proposed around the public fountain, as well as the addition of trees and public benches.

## Students

Giusy La Licata  
Jai Yoon Kim  
Gauthier Füllemann





0 25 50  
| | |



1.LANDSCAPE:  
green terraces  
-Restore stone walls  
-Gardens, herbs/flowers planting

2.URBAN SPACE  
-Main road: to be pedestrianised  
-Revalue relation human/cars streets  
-Entire street to be paved in stone  
-Particular attention to *piazzette*

-2.1 *Piazzette* with a view

-2.2 Remove non-essential parking places

-2.3 Church square to be paved in stone

6. Possible future renovation and reuse of existing buildings

4. CONSTRUCTION SITES: new buildings with housing typologies

4.1 Actual construction site- void in the urban fabric and rocky wall

4.2 Green terraces: buildings interacting with vegetation

4.3 Southern area near Casa Comunale

5. Demolition of derelict buildings of no particular quality

3.CAR PARKING AREA  
-new car park with green landscaping  
-benches  
-improved accessibility

- New buildings
- Buildings to be demolished
- Buildings to be potentially renovated
- Important public buildings
- Main road as public realm
- Landscape interventions

Building in need of restoration and adjustments to public realm



Study of existing buildings use



Study of existing building conditions



- 1  
Giusy La Licata
- 2  
Jai Yoon Kim
- 3  
Gauthier Füllem

0 25 50  
| | |

Proposed strategy plan



A series of observations emerged in the course of the survey of Campora. The first concerned the current use of the existing buildings and green areas.

The strategic plan aims to reorganise the gaps within the urban fabric, stitching up existing discontinuities. Buildings in need of repair were identified, and new paving proposed for the public realm.

Two sites are considered to explore potential future developments, in dialogue with the town’s built fabric.

Students

Beatrice Zago  
Francesco Tudino

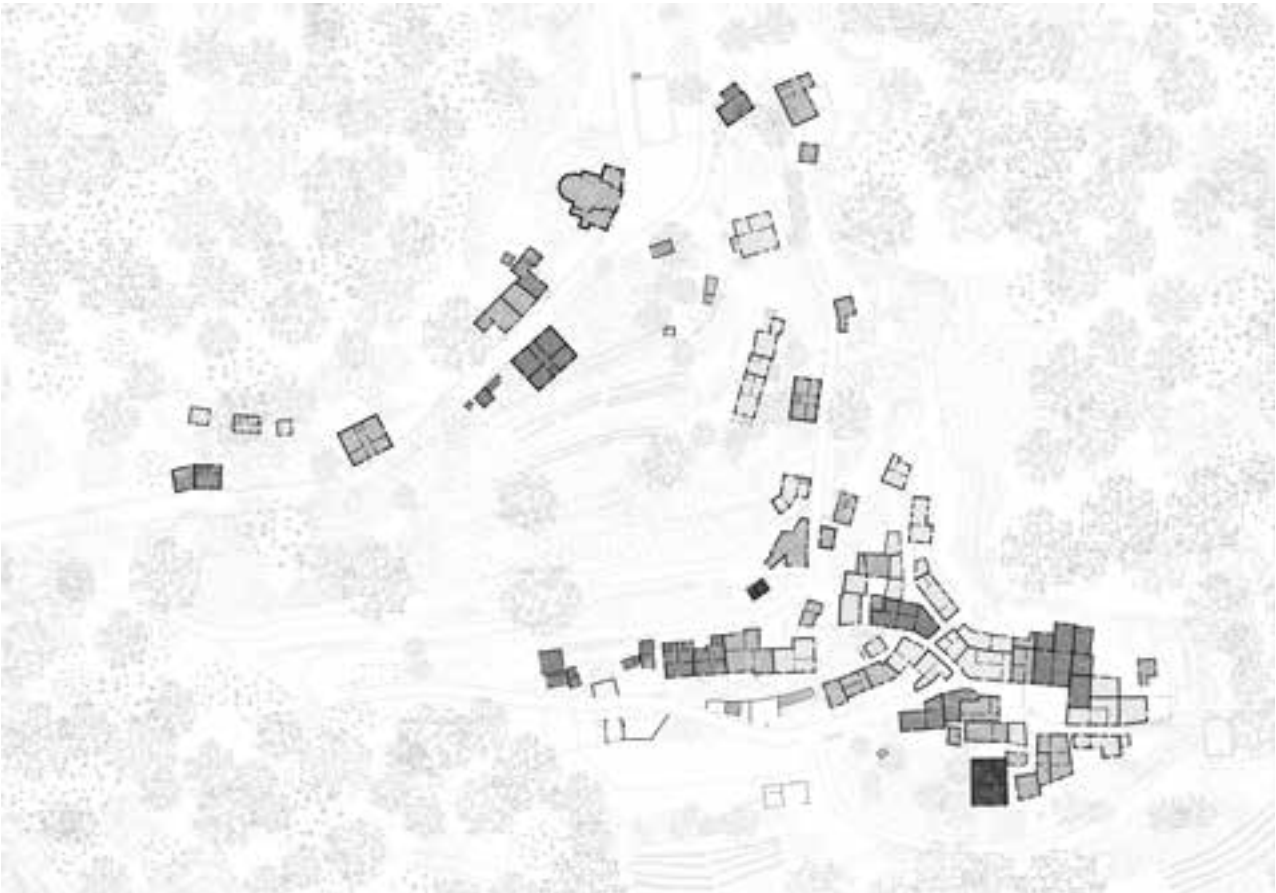






- Former agricultural land
- Private gardens
- Public garden areas
- Land used for agricultural

Use of green areas



- From 1800 to 1919
- From 1920 to 1945
- From 1946 to 1960
- From 1961 to 2021

Historical development of Campora



- Asphalt
- Stone paving
- Large stone paving
- Brick paving
- Tiles
- Grass block paving

Public realm and paving study



- New buildings
- Residential buildings to be restored
- Agricultural buildings to be restored
- Public green spaces
- Adjustments to public spaces
- New paving

Existing building conditions



## Acknowledgements

### Students

Giada Walzer  
Estelle Gagliardi  
Elsa Labouré  
Alex Farina  
Valentina Roncoroni  
Martina Penati  
Angela Monterisi  
Sara Mantovani  
Filippo Dal Lago  
Valentin Sanchez  
Justin Rellstab  
Olivia Chimenti  
Giulia Mauri  
Pietro Falchi  
Martina Bertani  
Sophie Agne  
Chiara Maisto  
Daniele Boschese  
Manon Arduino  
Giusy La Licata  
Jai Yoon Kim  
Gauthier Füllemann  
Beatrice Zago  
Francesco Tudino

### Credits

Concept: Jonathan Sergison  
Editing: Marina Aldrovandi  
Graphic concept: Cartlidge Levene  
Artwork: Mirella Mascolo and  
Cristina Roiz de la Parra

Copyright © 2021 Studio  
Sergison, Accademia di  
architettura, Università della  
Svizzera italiana, Mendrisio

All rights reserved.  
No part of this publication may be  
reproduced in any form without  
permission in writing from the author.